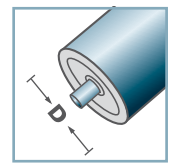
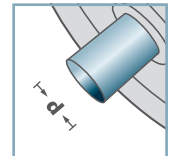


**LH-6204**



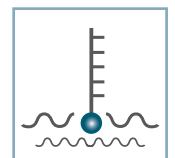
**D** [mm]  
63,5 - 133



**d** [mm]  
20



**C** [daN]  
-



**T** [°C]  
-



6204:  
D47, d20, H14



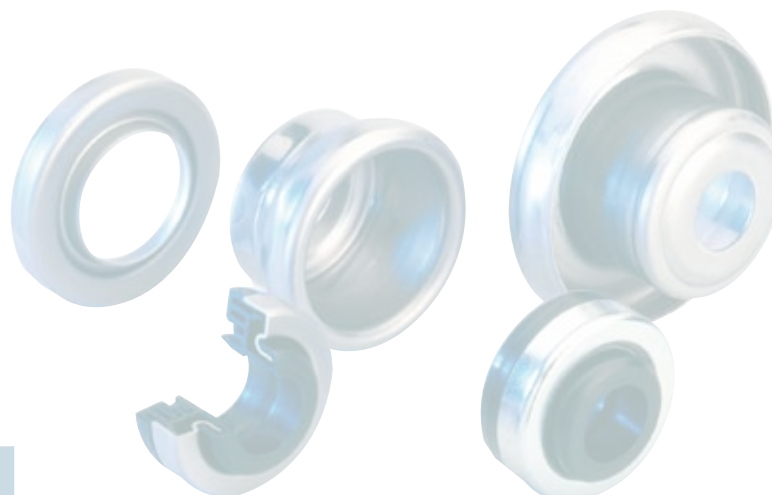
**Gitterbox** [Stck.]

ø63,5: 6000  
ø80: 3500  
ø89: 3100  
ø108: 2100  
ø133: 1150

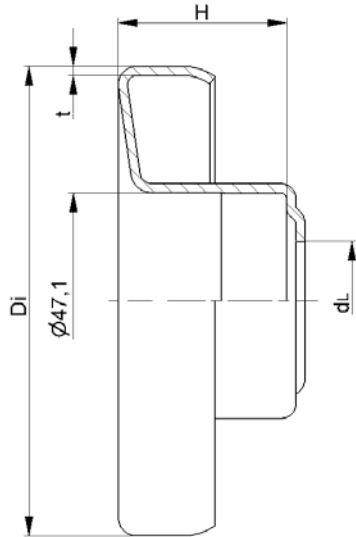
LH-6204				
Typ	Di	H	dL	t
LH-63,5x1,75/6204	60,5	33	26	1,5
LH-80x2,0/6204	76,5	36,5	26	2,0
LH-80x3,0/6204	74,5	36,5	26	2,0
LH-89x3,0/6204	83,5	36,5	26	2,0
LH-108x2,5/6204	103,3	36,5	26	2,0
LH-108x3,25/6204	102,1	36,5	26	2,0
LH-133x3,6/6204	126,3	36,5	26	2,5

**Weitere Varianten auf Anfrage!**

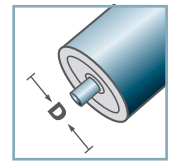
☛ Lagerhalter: Stahl



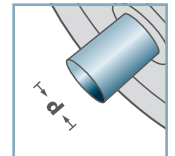
**LH/FL**



**LH-6204 N**



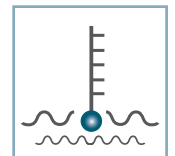
**D** [mm]  
63,5 - 108



**d** [mm]  
20



**C** [daN]  
-



**T** [°C]  
-



6204:  
D47, d20, H14



**Gitterbox** [Stck.]

ø63,5: 6000  
ø89: 3100  
ø108: 2100

LH-6204 N				
Typ	Di	H	dL	t
LH-63,5x1,75/6204N	60,5	31,8	21	1,5
LH-89x3,0/6204N *	83,7	33,5	21	1,5
LH-108x3,25/6204N	102,1	36,5	21	2,0

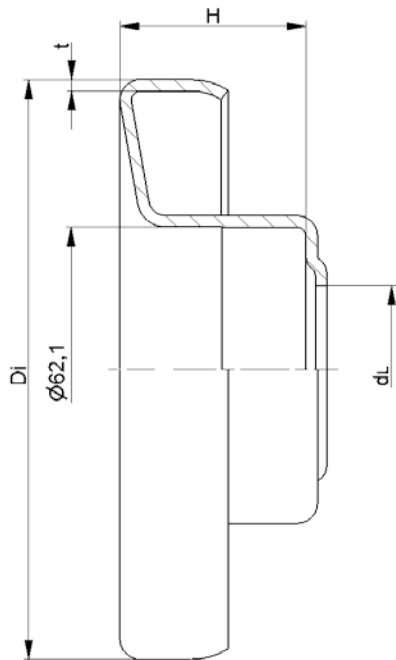
**Weitere Varianten auf Anfrage!**

☛ Lagerhalter: Stahl

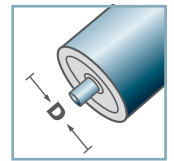
☛ \*Alternativ: Niro



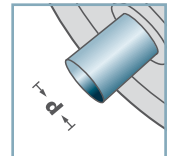
**LH/FL**



**LH-6305**



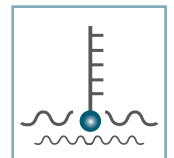
**D** [mm]  
89 - 133



**d** [mm]  
25



**C** [daN]  
-



**T** [°C]  
-



6305:  
D62, d25, H17



**Gitterbox** [Stck.]

ø89: 2600  
ø108: 1900  
ø133: 1150

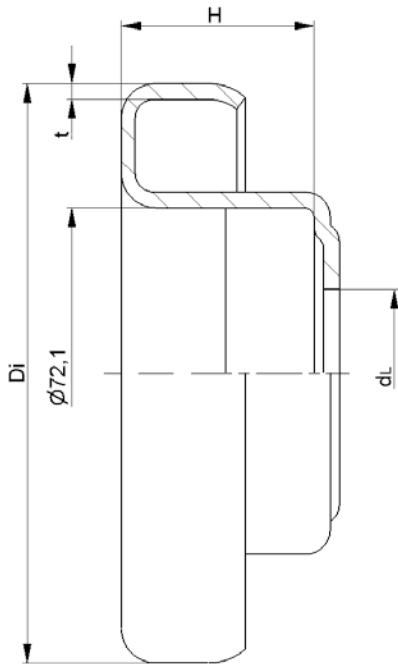
LH-6305				
Typ	Di	H	dL	t
LH-89x3,0/6305	83,5	40,5	36,5	2,0
LH-108x2,5/6305	103,3	40,5	36,5	2,0
LH-108x3,25/6305	102,1	40,5	36,5	2,0
LH-133x3,6/6305	126,3	40,5	36,5	2,5

**Weitere Varianten auf Anfrage!**

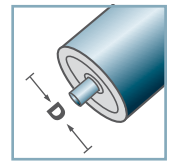
☛ Lagerhalter: Stahl



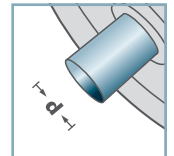
**LH/FL**



**LH-6306**



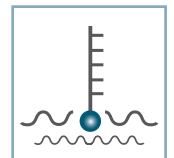
**D** [mm]  
108 - 133



**d** [mm]  
30



**C** [daN]  
-



**T** [°C]  
-



6306:  
D72, d30, H19



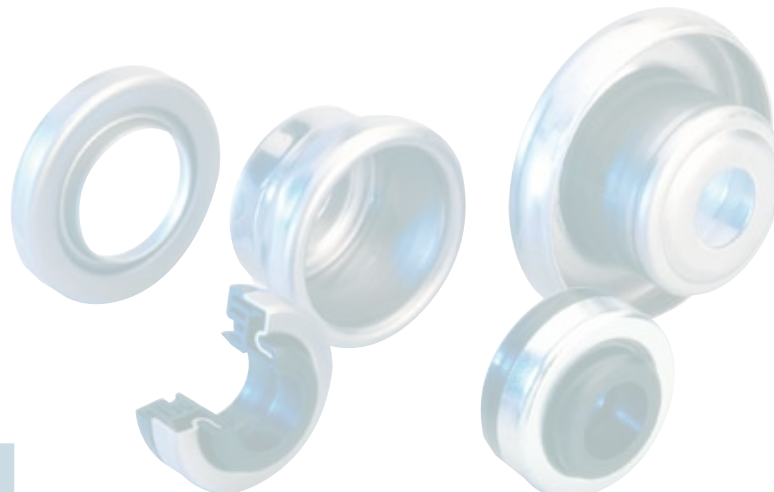
**Gitterbox** [Stck.]

ø108: 1700  
ø133: 1000

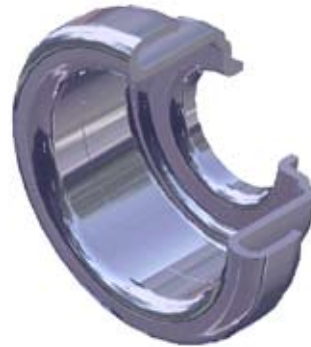
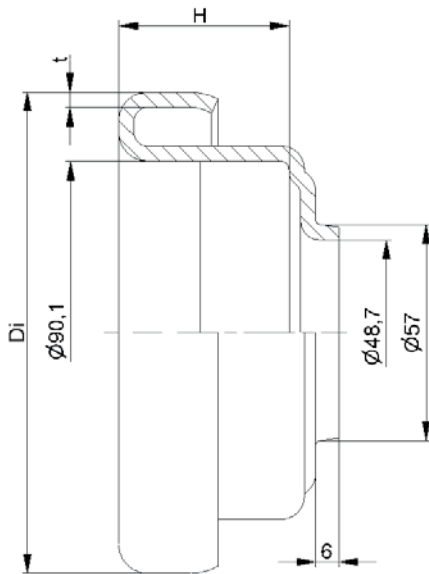
LH-6306				
Typ	Di	H	dL	t
LH-108x3,25/6306	102,1	42	36,5	3,0
LH-133x3,6/6306	126,3	42	36,5	3,5

**Weitere Varianten auf Anfrage!**

**L** Lagerhalter: Stahl



**LH/FL**

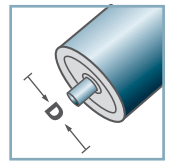


LH-6308			
Typ	Di	H	t
LH-133x3,6/6308	126,3	44,6	4,0
LH-159x4,5/6308	150,8	44,6	4,0

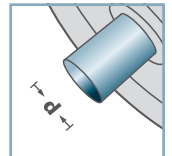
Weitere Varianten auf Anfrage!

☛ Lagerhalter: Stahl

LH-6308



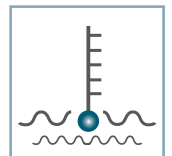
D [mm]  
133 - 159



d [mm]  
40



C [daN]  
-



T [°C]  
-

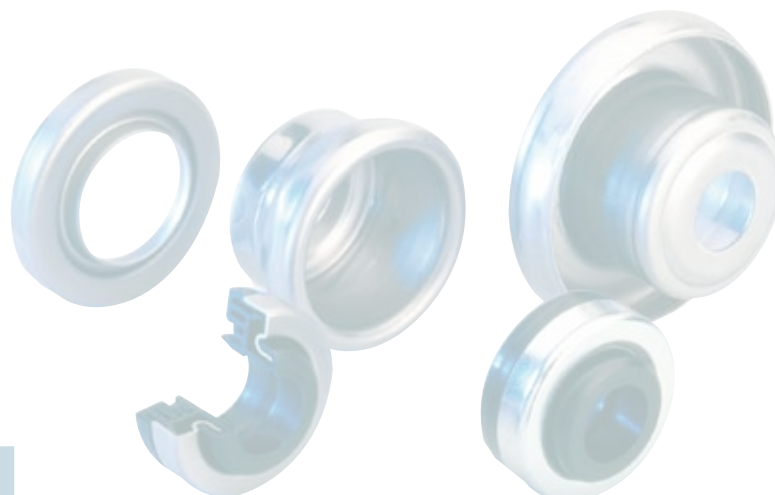


6308:  
D90, d40, H23

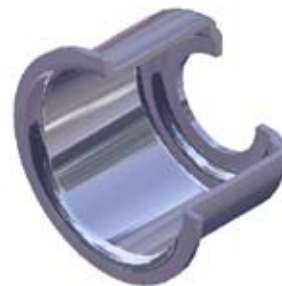
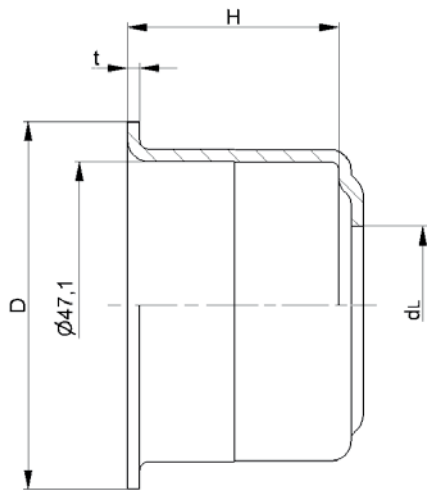


Gitterbox [Stck.]

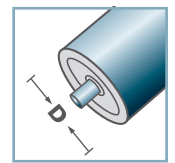
ø133: 800  
ø159: 600



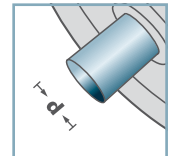
LH/FL



**FL-6204**



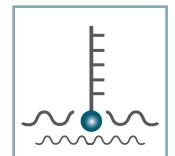
**D** [mm]  
60 - 76



**d** [mm]  
20



**C** [daN]  
-



**T** [°C]  
-



6204:  
D47, d20, H14



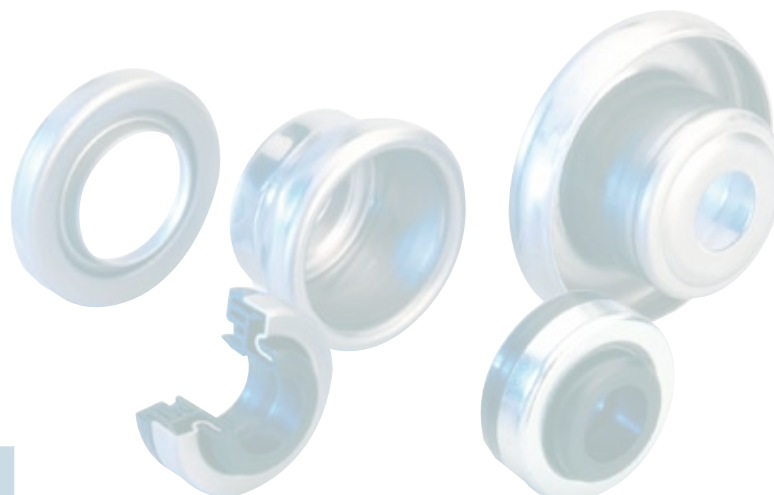
**Gitterbox** [Stck.]

ø60: 4000  
ø63,5: 4000  
ø70: 2000  
ø76: 2000

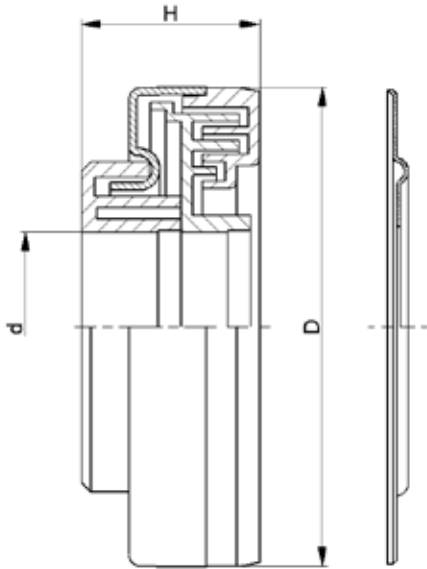
FL-6204				
Typ	D	H	dL	t
FL-60x3,0/6204	58,1	34	26	2,0
FL-63,5x2,9/6204	60,0	34,5	26	2,0
FL-70x2,0/6204	68,2	34,5	26	2,0
FL-70x2,9/6204	67,1	34,5	26	2,0
FL-76x2,0/6204	74,1	34,5	26	2,0
FL-76x2,9/6204	73,1	34,5	26	2,0

**Weitere Varianten auf Anfrage!**

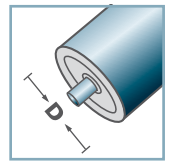
**C** Lagerhalter: Stahl



**LH/FL**

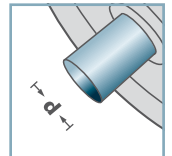


LH-



D [mm]

-

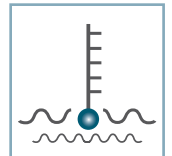


d [mm]  
17 - 40



C [daN]

-



T [°C]  
0° - 80°



-



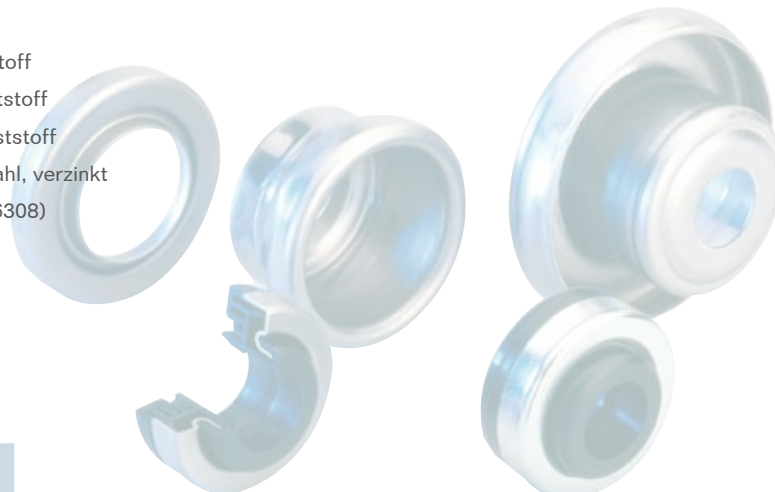
Karton [Stck.]

6204: 10000  
6305: 5000

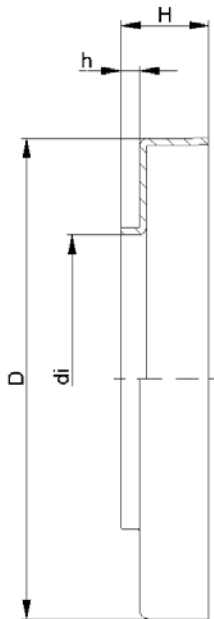
LH-			
Typ	D	H	d
LH-6303	47	22,5	17
LH-6204	47	22,5	20
LH-6204 N *	47	20,0	20
LH-6305	62	23,5	25
LH-6206	62	23,5	30
LH-6306	72	24,5	30
LH-6308	90	23,1	40

Weitere Varianten auf Anfrage!

- ☛ Dichtkappe: Stahl, verzinkt
- ☛ \* alternativ: Niro
- ☛ Regenkappe: Kunststoff
- ☛ Innenlabyrinth: Kunststoff
- ☛ Außenlabyrinth: Kunststoff
- ☛ Fetthaltescheibe: Stahl, verzinkt  
(nicht bei 6306 und 6308)



LH/FL

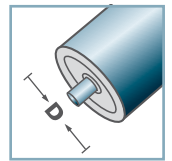


ST-				
Typ	D	di	H	h
ST-6204	47,5	27,4	11,9	2,4
ST-6305	62,5	37,4	11,4	2,4
ST-6306	72,5	37,4	11,4	1,4

Weitere Varianten auf Anfrage!

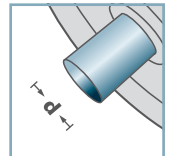
☛ Dichtkappe: Stahl

ST-



D [mm]

-



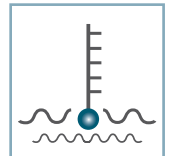
d [mm]

-



C [daN]

-



T [°C]

-



-



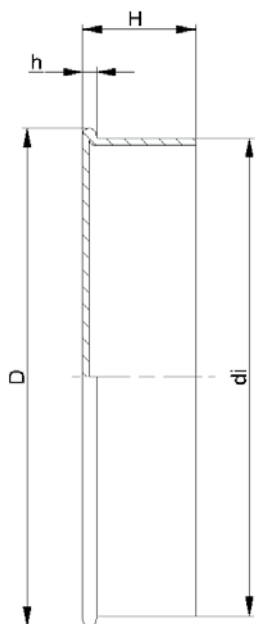
Karton [Stck.]

-



LH/FL



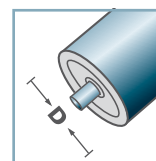


ST- geschlossen				
Typ	D	di	H	h
ST-6204	50	47,4	14,7	1,8
ST-6305	65	62,4	14,7	1,8
ST-6306	77	72,4	12,5	1,8

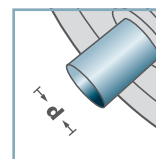
Weitere Varianten auf Anfrage!

☛ Dichtkappe: Stahl

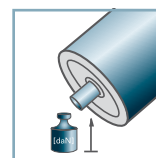
ST-



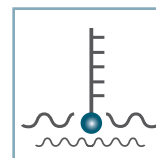
D [mm]



d [mm]



C [daN]



T [°C]

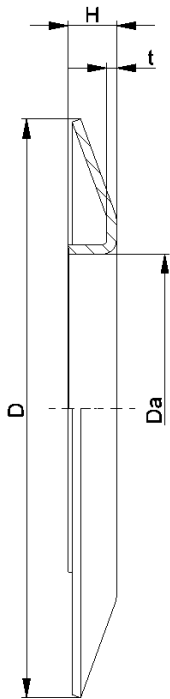


Karton [Stck.]

ST-6204 125  
ST-6305 100  
ST-6306 100



LH/FL

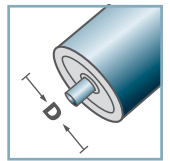


BS-				
Typ	Da ±0.1	D -2	H ±0.5	t
BS-50-130	49,9	130	10	1,5
BS-60-130	59,9	130	10	1,5
BS-80-150	79,9	150	14	2,5
BS-89-150	88,9	150	14	2,5
BS-108-150	107,9	150	14	2,5

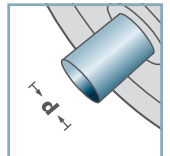
Weitere Varianten auf Anfrage!

**C** Bordscheibe: Stahl

BS-



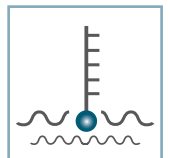
D [mm]



d [mm]



C [daN]



T [°C]



Karton [Stck.]



LH/FL