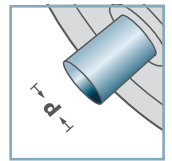


KRO						
Typ	Da	Di	H1	H2	H3	Tragzahl C [daN]
KRO-015L	31,0	24,0	21,0	9,5	5,5	50
KRO-022L	45,0	36,0	30,5	10,0	6,0	120
KRO-015	31,0	24,0	21,0	9,5	5,5	120
KRO-022	45,0	36,0	30,5	10,0	6,0	350



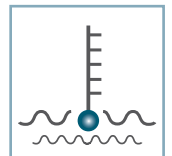
KRO-



d [mm]



C [daN]
50 - 120



T [°C]
-30° - 100°



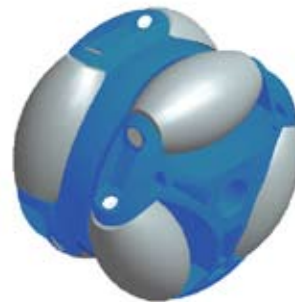
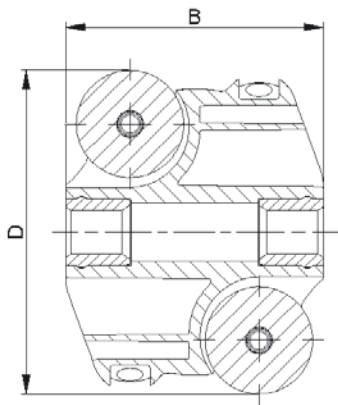
-



Karton [Stck.]

50

Kugelrollen

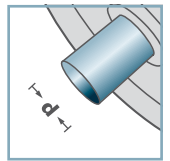


ASR-			
Typ	D	B	Tragzahl C [daN]
ASR-80	80	64	40
Weitere Varianten auf Anfrage!			

- ☛ Radkörper: Kunststoff
- ☛ Tonnenrolle: Kunststoff
- ☛ Achse: 1.4301



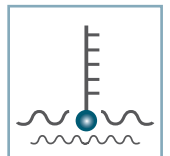
ASR-



d [mm]
8; 12; 15; SW14



C [daN]
40



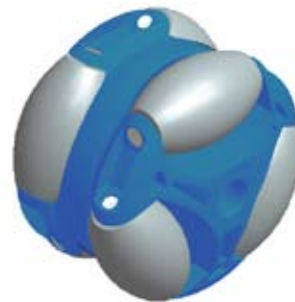
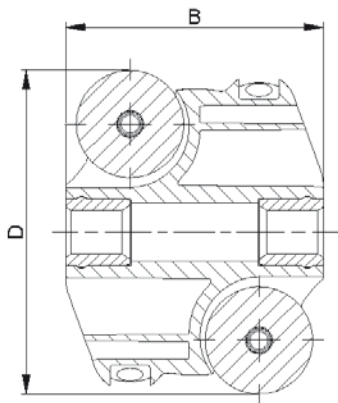
T [°C]
0° - 80°



Karton [Stck.]

50

Allseitenrollen



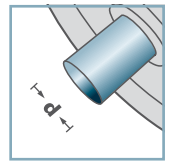
ASR-			
Typ	D	B	Tragzahl C [daN]
ASR-60	60	48	20
ASR-48	48	39	15
ASR-40	40	29	10

Weitere Varianten auf Anfrage!

- ☛ Radkörper: Kunststoff
- ☛ Tonnenrolle: Kunststoff
- ☛ Achse: 1.4301



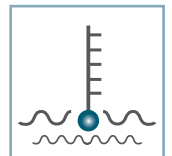
ASR-



d [mm]
8; 10; SW9



C [daN]
10 - 20



T [°C]
0° - 80°



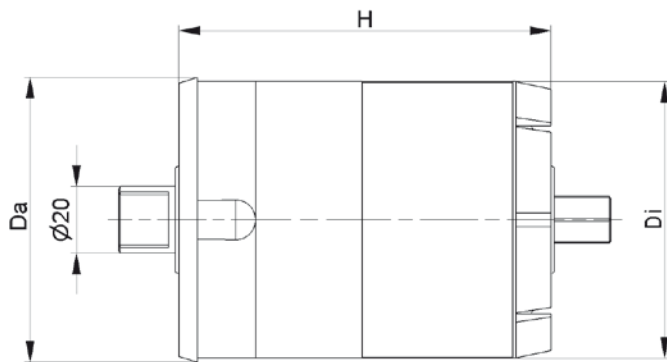
.



Karton [Stck.]

50

Allseitenrollen

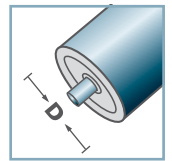


BR-				
Typ	Da	Di	H	Palette max. [kg]
BR-500	88,5	83	115	500
BR-800	88,5	83	115	800
BR-1200	88,5	83	115	1200

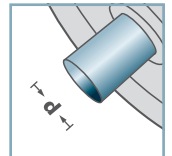
Bremsrolleneinsatz



BR-



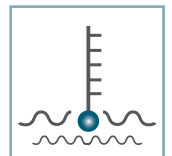
D [mm]
89



d [mm]
20



C [daN]
250



T [°C]
0° - 80°



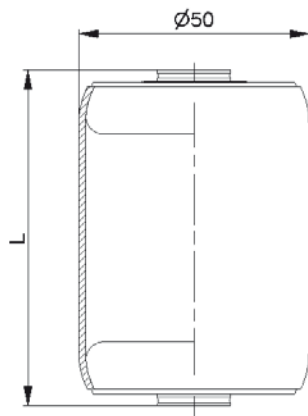
EP2



Karton [Stck.]

20

Bremsrollen



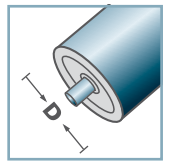
AMR-50x1,5.20		
Typ	L	Tragzahl C [daN]
AMR-50x1,5.20-66	66	160
AMR-50x1,5.20-73	73	160
AMR-50x1,5.20-80	80	160
AMR-50x1,5.20-100	100	160

Weitere Varianten auf Anfrage!

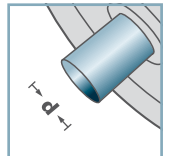
- ☛ Rohr: Stahl, verzinkt
- ☛ Metalltragrollenlager MTR-20



AMR-50.20



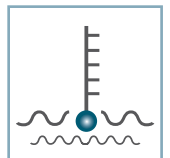
D [mm]
50



d [mm]
8; 10; 12; SW11



C [daN]
160



T [°C]
0° - 100°



Vactra No. 2



Karton [Stck.]

Achslose Kurzrollen