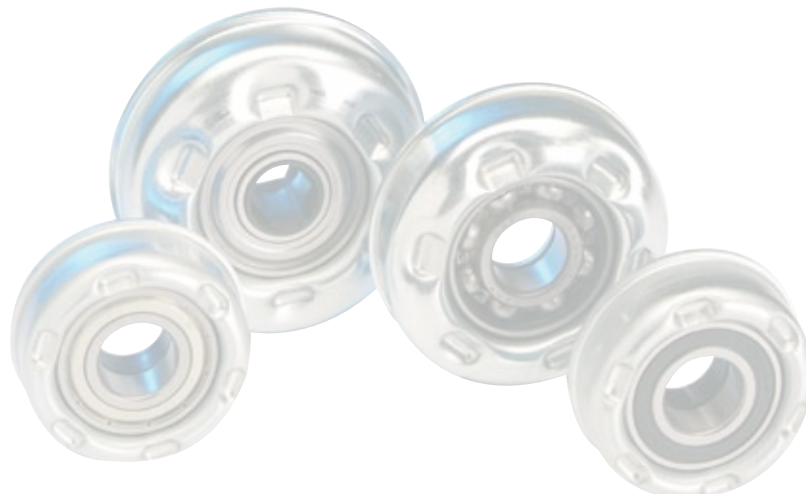


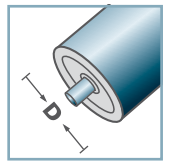
MTS-46			
Typ	Di ±0.1	Da ±0.2	Tragzahl C [daN]
MTS-63,5x2,9.46	58,1	61,5	200

Weitere Varianten auf Anfrage!

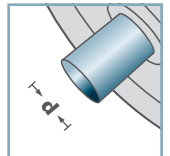
- ☛ Radkörper: Stahl, verzinkt
- ☛ Distanzbuchse: Kunststoff
- ☛ Kugellager 6004



MTS-46



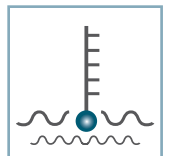
D [mm]
63,5



d [mm]
20



C [daN]
200



T [°C]
0° - 100°

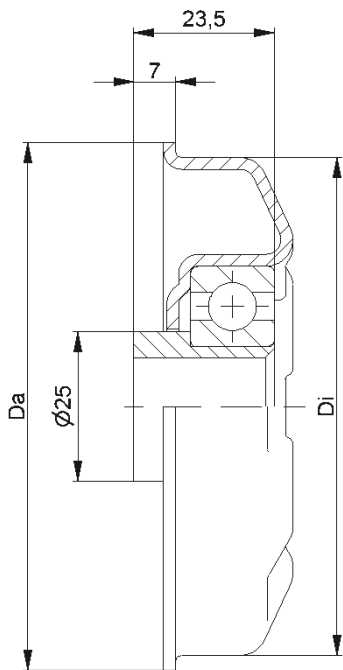


EP 2

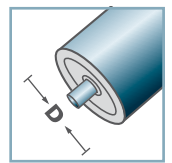


Karton [Stck.]

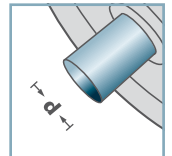
50



MTS-44



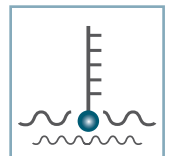
D [mm]
80 - 108



d [mm]
16; 17; SW14



C [daN]
250



T [°C]
0° - 100°



EP 2



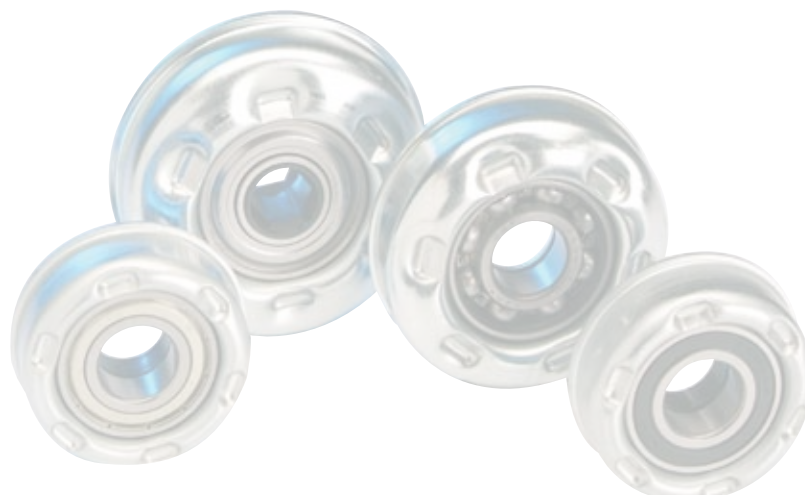
Karton [Stck.]

50

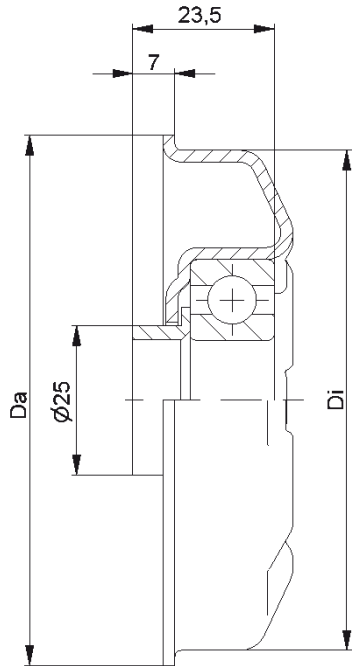
MTS-44			
Typ	Di ±0.1	Da ±0.2	Tragzahl C [daN]
MTS-80x2,0.44	76,5	79,5	250
MTS-80x3,0.44	74,5	79,5	250
MTS-89x3,0.44	83,5	88,5	250
MTS-89x3,25.44	83,0	88,5	250
MTS-108x3,25.44	102,0	107,5	250

Weitere Varianten auf Anfrage!

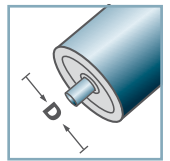
- ☛ Radkörper: Stahl, verzinkt
- ☛ Reduzierbuchse: Kunststoff
- ☛ Kugellager 6204



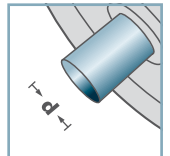
MTS



MTS-44



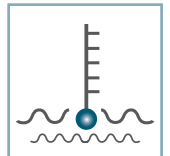
D [mm]
80 - 108



d [mm]
20



C [daN]
250



T [°C]
0° - 100°



EP 2



Karton [Stck.]

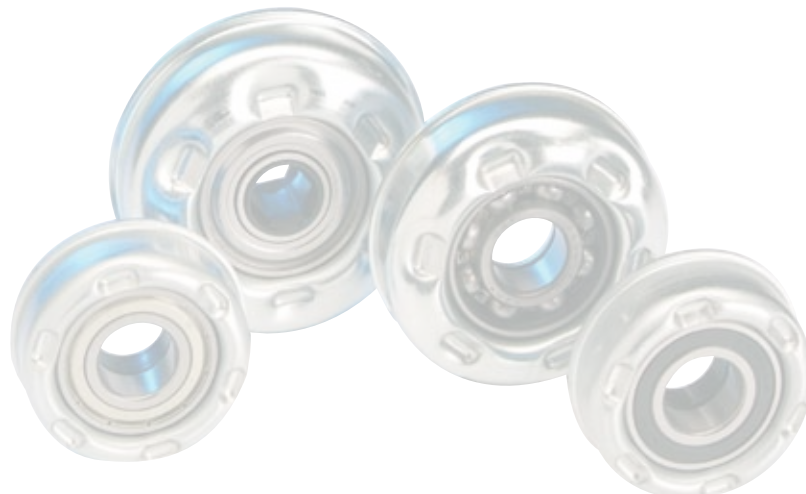
50

MTS-44

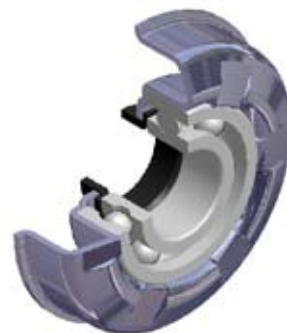
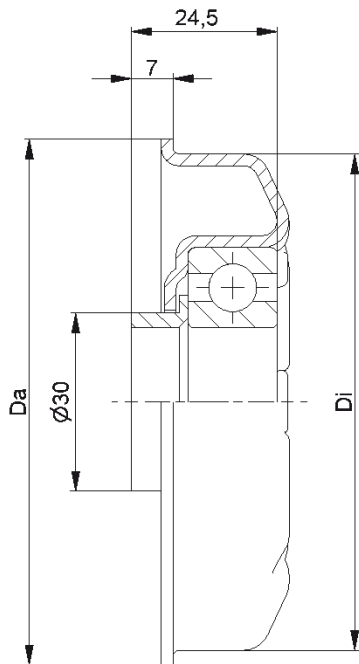
Typ	Di ±0.1	Da ±0.2	Tragzahl C [daN]
MTS-80x2,0.44	76,5	79,5	250
MTS-80x3,0.44	74,5	79,5	250
MTS-89x3,0.44	83,5	88,5	250
MTS-89x3,25.44	83,0	88,5	250
MTS-108x3,25.44	102,0	107,5	250

Weitere Varianten auf Anfrage!

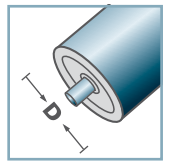
- ☛ Radkörper: Stahl, verzinkt
- ☛ Distanzbuchse: Kunststoff
- ☛ Kugellager 6204



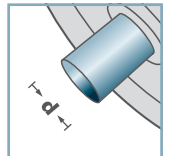
MTS



MTS-47



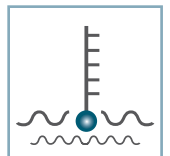
D [mm]
89 - 108



d [mm]
25



C [daN]
250



T [°C]
0° - 100°



EP 2



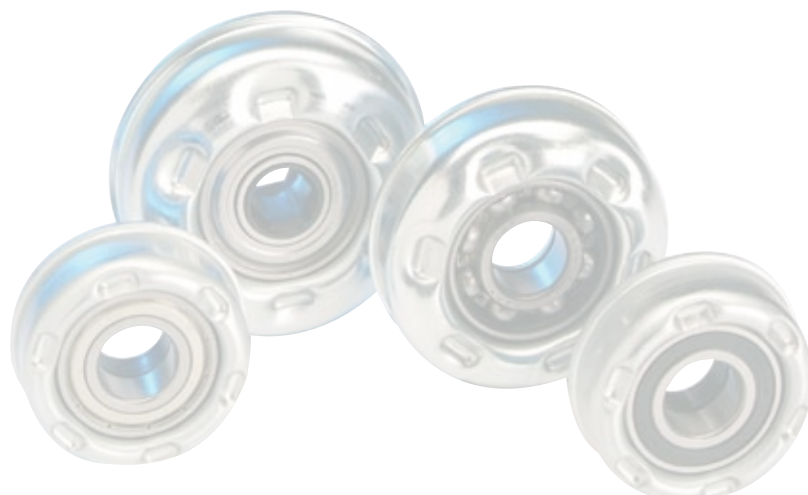
Karton [Stck.]

50

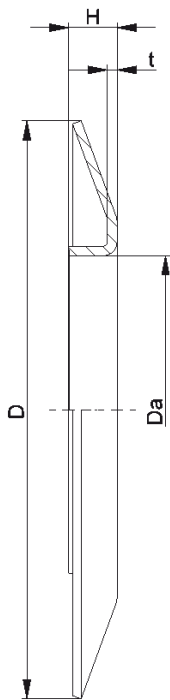
MTS-47			
Typ	Di ±0.1	Da ±0.2	Tragzahl C [daN]
MTS-89x3,0.47	83,5	88,5	250
MTS-108x3,25.47	102,0	107,5	250

Weitere Varianten auf Anfrage!

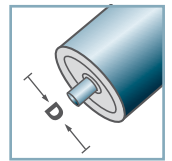
- ☛ Radkörper: Stahl, verzinkt
- ☛ Distanzbuchse: Kunststoff
- ☛ Kugellager 6205



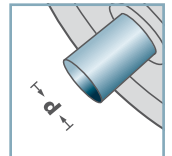
MTS



BS-



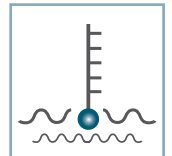
D [mm]
50 - 108



d [mm]
-



C [daN]
-



T [°C]
-



-



Karton [Stck.]

25

BS-				
Typ	Da ±0.1	D -2	H ±0.5	t
BS-50-130	49,9	130	10	1,5
BS-60-130	59,9	130	10	1,5
BS-80-150	79,9	150	14	2,5
BS-89-150	88,9	150	14	2,5
BS-108-150	107,9	150	14	2,5

Weitere Varianten auf Anfrage!

C Bordscheibe: Stahl

