

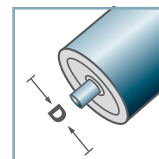
SLR	
Typ	Tragzahl C [daN]
SLR-480	20

Weitere Varianten auf Anfrage!

- ☛ Außenschalen: Stahl, verzinkt
- ☛ Lagerschale: Stahl, gehärtet
- ☛ Nabe: Stahl, gehärtet, verzinkt
- ☛ Kugel: Stahl

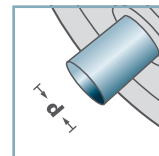


SLR-

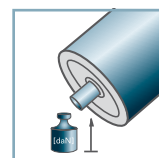


D [mm]

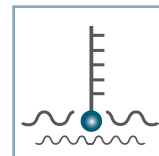
-



d [mm]
6; 8



C [daN]
20



T [°C]
-30° - 140°



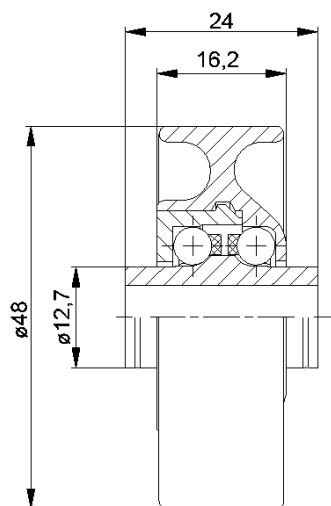
-



Karton [Stck.]

250

KLR/SLR/SR



KLR-02/03

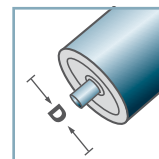
Typ	Normal .02	Niro .03	Tragzahl C [daN]
KLR-480	x	x	10

Weitere Varianten auf Anfrage!

- ☛ Radkörper: Kunststoff
- ☛ Nabe: Kunststoff
- ☛ Lagerdeckel: Kunststoff
- ☛ Käfig: Kunststoff
- ☛ Kugel
 - ☛ 02: Stahl
 - ☛ 03: 1.4034

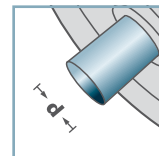


**KLR-02
KLR-03**



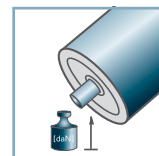
D [mm]

-



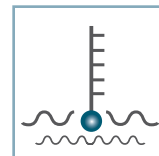
d [mm]

6; 8



C [daN]

10



T [°C]

0° - 80°



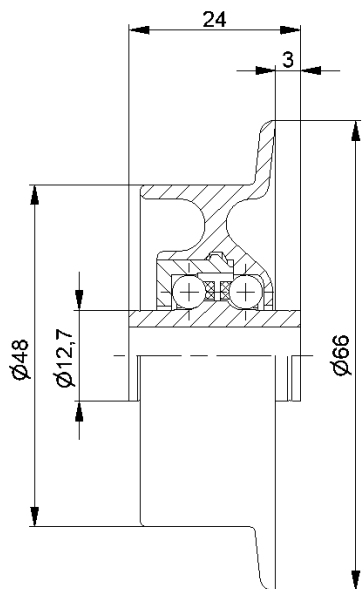
-



Karton [Stck.]

250

KLR/SLR/SR



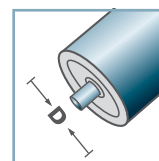
SR-02/03			
Typ	Normal	Niro	Tragzahl C [daN]
SR-480	.02 x	.03 x	10

Weitere Varianten auf Anfrage!

- ☛ Radkörper: Kunststoff
- ☛ Nabe: Kunststoff
- ☛ Lagerdeckel: Kunststoff
- ☛ Käfig: Kunststoff
- ☛ Kugel
 - ☛ 02: Stahl
 - ☛ 03: 1.4034

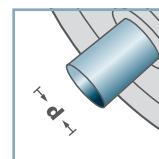


SR-02
SR-03

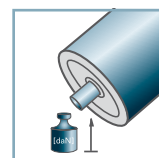


D [mm]

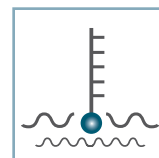
-



d [mm]
6; 8



C [daN]
10



T [°C]
0° - 80°



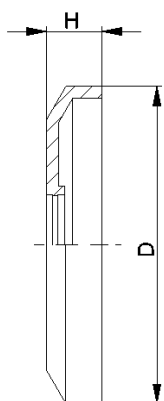
-



Karton [Stck.]

250

KLR/SLR/SR



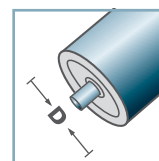
DK-KLR		
Typ	D	H
DK-KLR-02	40,5	7

Weitere Varianten auf Anfrage!

☛ Dichtkappe: Kunststoff

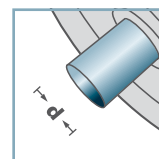


DK-KLR-02



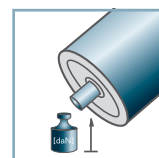
D [mm]

-



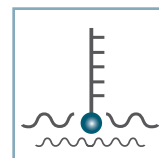
d [mm]

-



C [daN]

-



T [°C]

0° - 80°



-



Karton [Stck.]



KLR/SLR/SR