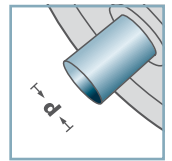
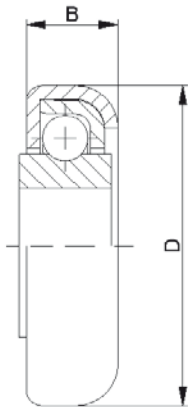


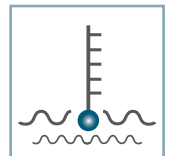
**RL-0.280**



**d** [mm]  
10; 12; 12,8



**C** [daN]  
7 - 10



**T** [°C]  
0° - 80°



**RL-0.280**

Typ	D	B
RL-0.280	28,0	7,6

**Weitere Varianten auf Anfrage!**

- ☛ Kapsel: Stahl, verzinkt
- ☛ Lagerschale: Stahl
- ☛ Kugel: Stahl
- ☛ Innenring:
  - ☛ Stahl: C=10daN
  - ☛ Kunststoff: C=7daN; 0° - 80°

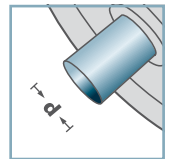
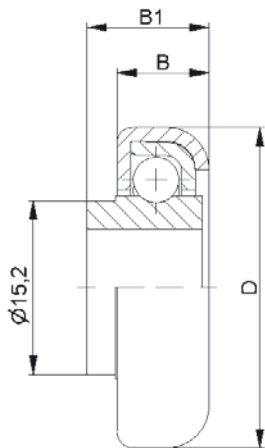


**Karton** [Stck.]

500

# Ringkugellager

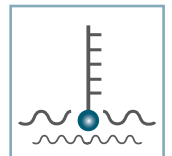
**RL-0.280**



10; 12; 12,8



**C** [daN]  
7 - 10



**T** [°C]  
0° - 80°



RL-0.280 mit Bund			
Typ	D	B	B1
RL-0.280 m.B.	28,0	7,6	10,0

**Weitere Varianten auf Anfrage!**

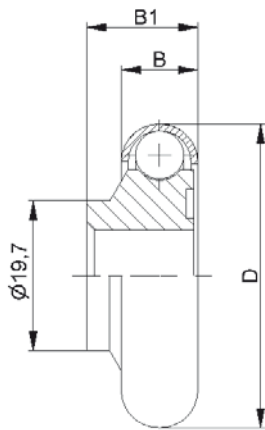
- ☛ Kapsel: Stahl, verzinkt
- ☛ Lagerschale: Stahl
- ☛ Kugel: Stahl
- ☛ Innenring:
  - ☛ Stahl: C=10daN
  - ☛ Kunststoff: C=7daN; 0° - 80°



**Karton** [Stck.]

500

# Ringkugellager



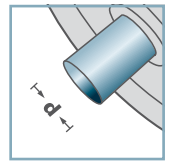
RL-0.400			
Typ	D	B	B1
RL-0.400	40,0	10,0	14,5

Weitere Varianten auf Anfrage!

- ☛ Kapsel: Stahl, verzinkt
- ☛ Kugel: Stahl
- ☛ Innenring: Kunststoff



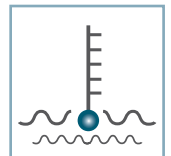
RL-0.400



d [mm]  
10; 12



C [daN]  
7



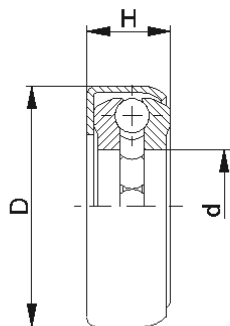
T [°C]  
0° - 80°



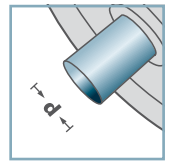
Karton [Stck.]

250

# Ringkugellager



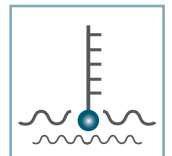
LL-



**d** [mm]  
7; 8; 9; 10



**C** [daN]  
450



**T** [°C]  
-



-

LL-				
Typ	d	D	H	Tragzahl C [daN]
LL-1.073	7,2	15,0	7,0	20
LL-1.082	8,2	15,8	6,85	20
LL-1.083	8,3	17,5	6,2	20
LL-1.093	9,3	17,5	6,2	20
LL-1.103	10,3	17,5	6,2	22

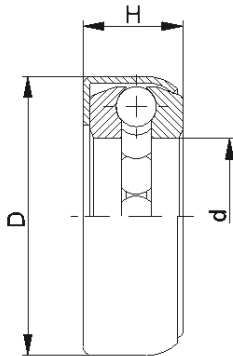
**Weitere Varianten auf Anfrage!**

- ☛ Kapsel: Stahl
- ☛ Lagerring: Stahl, gehärtet
- ☛ Kugel: Stahl



**Karton** [Stck.]  
500

# Axialrillenkugellager



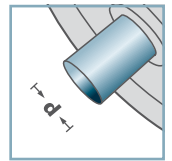
LL-				
Typ	d	D	H	Tragzahl C [daN]
LL-1.113	11,3	20,0	7,0	22
LL-1.123	12,3	22,0	8,0	22
LL-1.133	13,3	22,0	8,0	22
LL-1.141	14,15	22,0	7,7	22

**Weitere Varianten auf Anfrage!**

- ☛ Kapsel: Stahl
- ☛ Lagerring: Stahl, gehärtet
- ☛ Kugel: Stahl



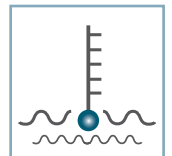
LL-



**d** [mm]  
11; 12; 13; 14



**C** [daN]  
450 - 600



**T** [°C]  
-



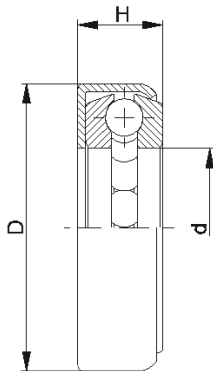
-



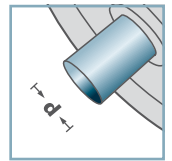
**Karton** [Stck.]

ø11: 500  
ø12: 250  
ø13: 250  
ø14: 250

# Axialrillenkugellager



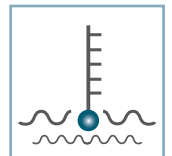
LL-



**d** [mm]  
14; 16; 20



**C** [daN]  
750



**T** [°C]  
-



LL-				
Typ	d	D	H	Tragzahl C [daN]
LL-1.143	14,3	25,0	8,5	22
LL-1.163	16,4	27,0	9,0	24
LL-1.201	20,1	36,6	10,8	24

**Weitere Varianten auf Anfrage!**

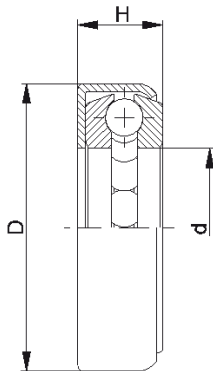
- ☛ Kapsel: Stahl
- ☛ Lagerring: Stahl, gehärtet
- ☛ Kugel: Stahl



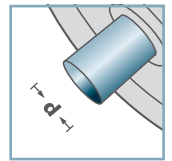
**Karton** [Stck.]

ø14: 200  
ø16: 200  
ø20: 350

# Axialrillenkugellager



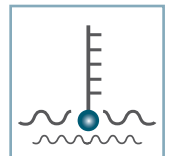
LL-



**d** [mm]  
20; 22; 23;  
24; 25; 26



**C** [daN]  
240 - 260



**T** [°C]  
-



LL-				
Typ	d	D	H	Tragzahl C [daN]
LL-1.203	20,4	33,0	10,0	26
LL-1.223	22,4	43,5	12,0	26
LL-1.233	23,4	43,5	12,0	26
LL-1.243	24,4	43,5	12,0	26
LL-1.253	25,4	43,5	12,0	26
LL-1.263	26,4	43,5	12,0	26

**Weitere Varianten auf Anfrage!**

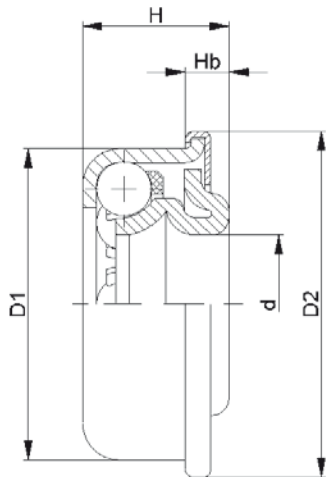
- ☛ Kapsel: Stahl
- ☛ Lagerring: Stahl, gehärtet
- ☛ Kugel: Stahl



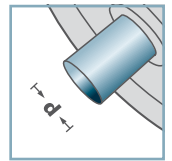
**Karton** [Stck.]

ø20:	100
ø22:	50
ø23:	50
ø24:	50
ø25:	50
ø26:	50

# Axialrillenkugellager



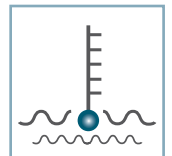
**KL-**



**d** [mm]  
10; 12; 12,7; 14



**C** [daN]  
30



**T** [°C]  
0 - 80°



EP2

KL-					
Typ	d	D1	D2	H	Hb
KL-4.10A	10,05	25,05	28,5	12,8	4,0
KL-4.12	12,05	27,05	30,2	12,2	3,8
KL-4.127	12,75	27,05	30,2	12,2	3,8
KL-4.14	14,05	27,05	30,2	12,0	3,6

**Weitere Varianten auf Anfrage!**

- ☛ Lagerschale: Stahl, gehärtet
- ☛ Konus: Stahl, gehärtet
- ☛ Staubdeckel: Stahl, verzinkt
- ☛ Kugelkäfig: Kunststoff
- ☛ Kugel: Stahl



**Karton** [Stck.]

KL-4.10A: 500  
KL-4.12: 1000  
KL-4.127: 1000  
KL-4.14: 1000

# Konuskugellager